

A large, dark, curved composite structure is being lifted by a crane in a factory setting. The structure has a complex, multi-layered design with internal supports. A red crane is visible on the left, and another crane is on the right. The background shows a large industrial building with a corrugated metal roof. The text "COMPOSITE SPECIALS" is overlaid in large white letters.

COMPOSITE SPECIALS

RONDAL
ULTIMATE RELIABILITY

PLAN FOR THE UNEXPECTED





PRODUCTS THAT ENSURE ULTIMATE RELIABILITY IN ANY SITUATION

Rondal designs and manufactures high-performance sailing systems and equipment for superyachts. Rondal is recognized as the best for its unrivalled Dutch build quality and innovative technical solutions, achieved through a dedicated focus on continuous improvement in both products and services.

As a building partner, Rondal leverages decades of experience and relieves the client by taking on turnkey projects. The products of Rondal ensure ultimate reliability in any situation.

The Rondal team consists of approximately 75 professionals, including highly qualified engineers, composite workers, CNC machine operators, welders, and mechanics as well as a host of complementary specialists.

With decades of experience in composite and aluminum engineering and manufacturing, Rondal serves the market with specialized products for both sailing yachts and motor yachts.





RONDAL COMPOSITE EXPERTISE

Rondal's expertise in composite mast manufacturing, combined with our dedicated facilities, provides an excellent infrastructure for diversification into other product groups.

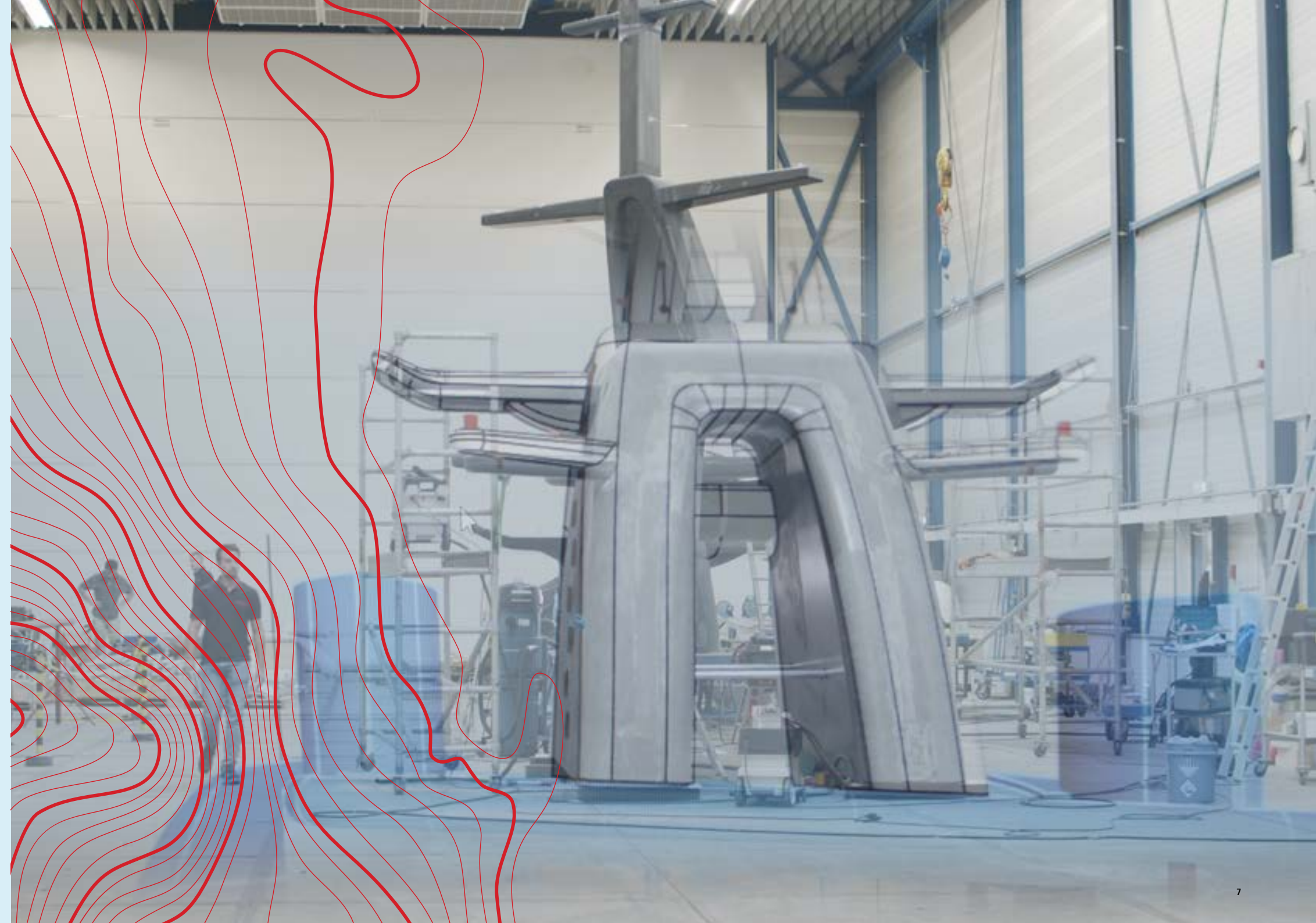
In recent years, Rondal has built up a significant portfolio of composite projects.

Customized Solutions

Rondal offers a full range of options, from 'plug-and-play' systems to exclusive composite construction. Rely on the expertise of specialized composite design and engineering companies to consistently ensure the best possible design.

Collaborative approach

To gain valuable insights, Rondal collaborates with external partners, including the nearby Royal Netherlands Aerospace Centre (NLR) and various universities.







ADVANCED COMPOSITES & PRODUCTION

Rondal's manufacturing facility stands as a testament to precision and innovation. The space is meticulously designed and optimized to cater to various aspects of composite manufacturing, with specialized areas tailored for distinct production stages.

These facilities collectively highlight Rondal's commitment to superior manufacturing standards and their ability to meet the most demanding composite production requirements.

8,407 M²

total facilities

2,450 M²

composite workshop
(temperature and humidity controlled)

1,750 M²

composite assembly area

750 M²

dedicated painting hall

CNC CUTTING MACHINE

for fibers

LLOYD'S, RINA, AND DNV

certified workspaces

TWO AUTOCLAVES

- 7 m long and 1.2 m in diameter
- 9 m long and 1.7 m in diameter

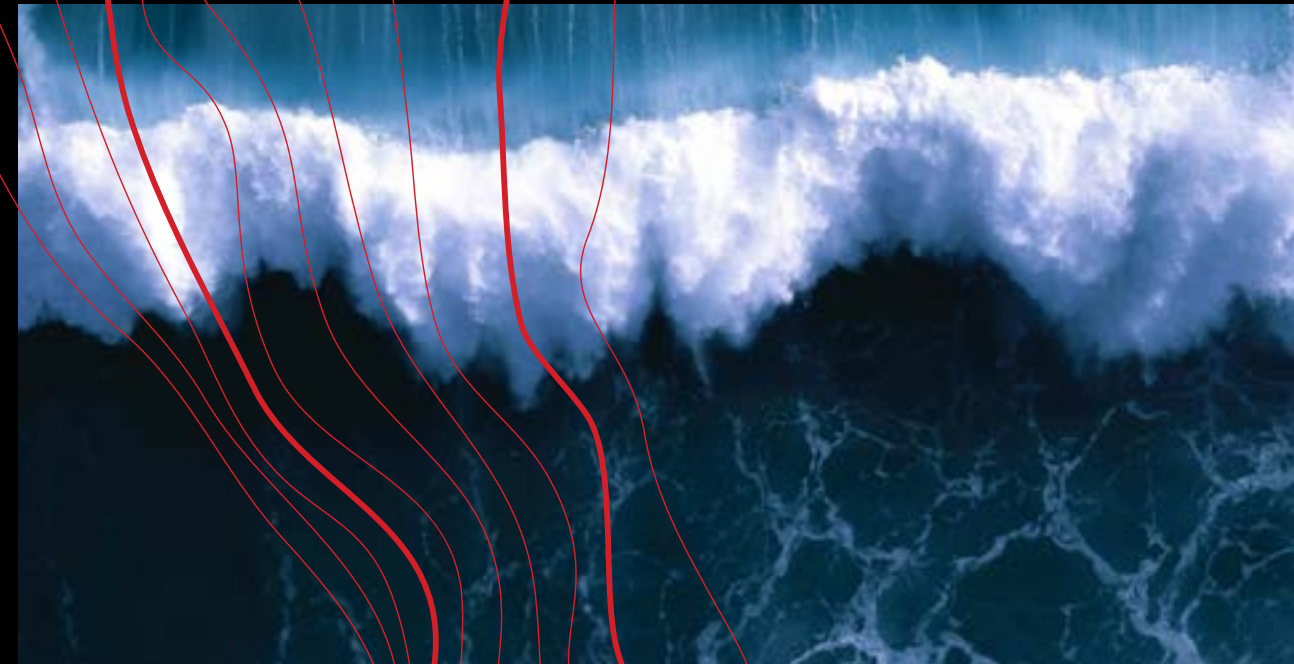




OUT OF AUTOCLAVE (OOA) MANUFACTURING

Rondal was an early adopter of the OOA (Out of Autoclave) production method and has since perfected the art. OOA enables very lean and flexible production with virtually unlimited freedom in size and shape. OOA and advanced pre-preg laminate products allow for fast production times while easily achieving aerospace-grade results.

Our purpose-built ovens, one measuring over 1,000 m² and the other more than 20 m² (modular oven), can both cure at temperatures up to 100 degrees Celsius.



COMPOSITE BENEFITS

- High strength / low weight
- Cost effectiveness
- Aesthetics: freedom of geometry
- Insulation
- Sonar / radar transparency
- Non-magnetic
- Low maintenance
- Chemical / corrosion resistance
- Fatigue resistance
- Limited thermal expansion
- Cosmetic carbon



RONDAL COMPOSITE PRODUCTS

- Masts, booms, and spreaders
- Rudders and foils
- Superstructures and biminis
- Canopies and hardtops
- Radar masts
- Custom high-loaded parts
(main sheet arch, keel trunk)
- Deck hatches
- Large hatches / garage doors
- Specials

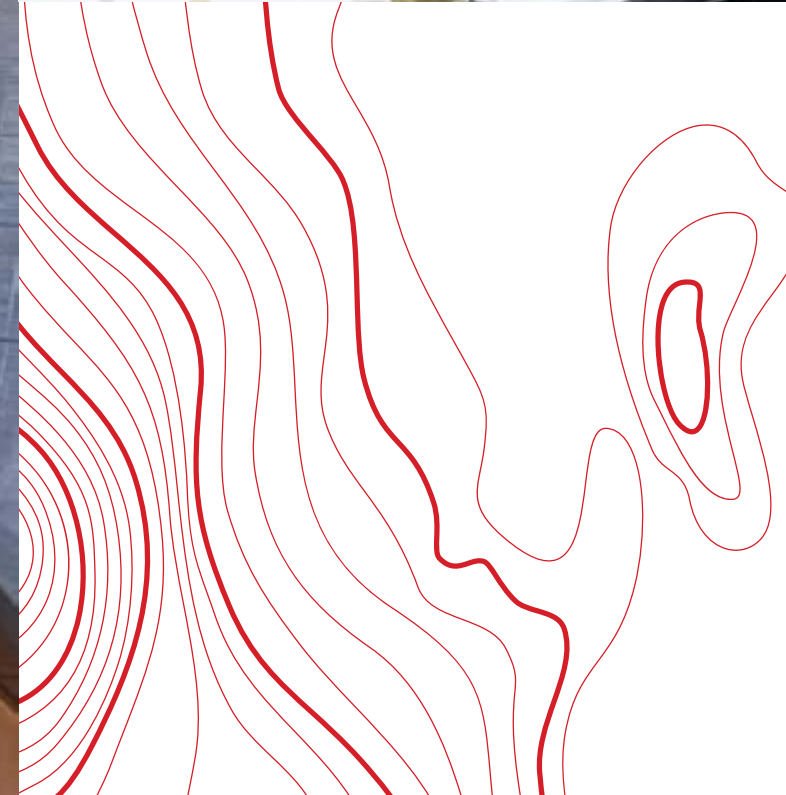




SUPERSTRUCTURE COMPOSITE BENEFITS

Saving weight onboard generally improves performance and fuel economy, while saving weight aloft, in particular, enhances stability – and that is just one example of the many advantages of carbon composite structures, benefiting both motor yacht and sailing yacht naval architecture.

Carbon composite is widely recognized for being incredibly strong, stiff, and lightweight. One of the lesser-known benefits is its unlimited freedom of geometry, opening up new possibilities for style and design that are impossible to achieve in metal. Additionally, due to its high chemical and corrosion resistance, high fatigue resistance, and low thermal expansion, the material requires no maintenance.





COMPOSITE SPECIALS

Rondal is pleased to demonstrate its value where one-off products are required, recognizing that our industry is a creative and challenging world in which architects and yards strive to offer the best possible solutions for engineering challenges and unique, innovative features.

Examples include:

- Windscreen surrounds / window frames
- Interior / exterior furniture (cosmetic / structural)
- Louvers
- Steering pedestals
- Sail drum
- Winches
- Stanchions
- Ladders
- Helm stations
- Furniture
- Protective covers
- Boom cradle
- Pool covers
- Platforms



PRODUCTION QUALITY

Quality is ensured throughout the production process:

- Lloyd's, RINA, and DNV certification for used materials
- Stringent work process with records kept for each layer of material, date, batch number, etc.
- Controlled temperature and humidity in production hall
- Controlled temperature and humidity in storage facilities
- Controlled temperature and vacuum during curing cycles
- NDT inspections
- More than 25 years of experience in composite production



ADVENTURE IS WAITING FOR YOU THERE

WITH PRODUCTS THAT ENSURE ULTIMATE RELIABILITY
IN ANY SITUATION

Rondal

Flevoweg 1

8325 PA Vollenhove, The Netherlands

T +31 527 243 500

E info@rondal.com

rondal.com

RONDAL
ULTIMATE RELIABILITY